



Alphabet Square
London, E3 3RT
£3,200 Per Month


elms
ESTATES

Elms Estates are delighted to have available to rent this Large 4 Bedroom Town House Arranged Over Four Floors.

Situated within a peaceful, secure gated development that is located with the convenience of local shops nearby and you are within a short walk of either Tube Stations or the DLR with bus routes servicing these also.

Internally the property has an open plan kitchen and living space, 4 double bedrooms and 2 bathrooms as well as a balcony and shared rear garden. The property is modern throughout benefits from gas central heating and an allocated parking space.

Alphabet Square is available to move in to Immediately and an early internal inspection is highly recommended to avoid disappointment.

For more information or to arrange a viewing please do not hesitate to call in and speak with one of our Property Consultants.



Exterior



Open Plan Kitchen



Open Plan Living Area



Upper Ground Floor Reception



Bedroom 1



Shower Room



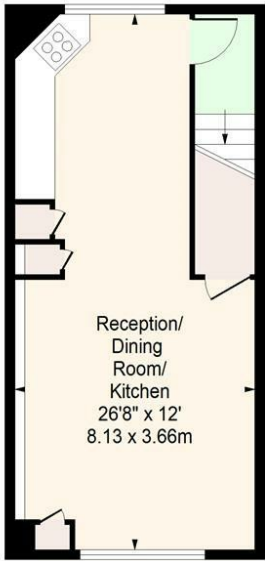
Bedroom 2





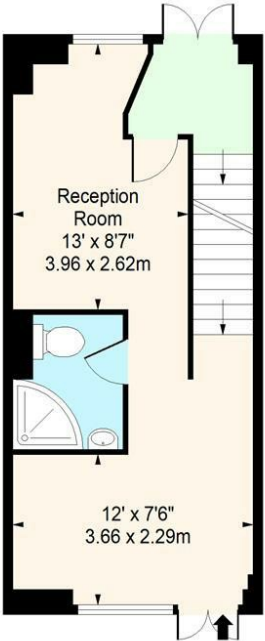
Alphabet Square, London, E3

Approx. Gross Internal Area 1268 Sq Ft - 117.80 Sq M



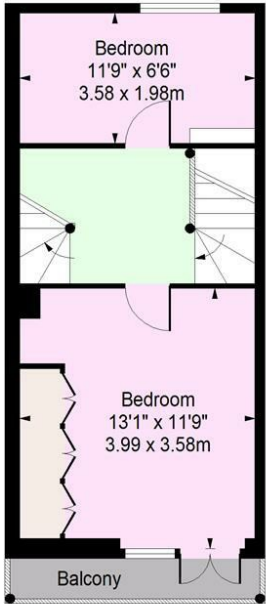
Lower Ground Floor

Floor Area 317 Sq Ft - 29.45 Sq M



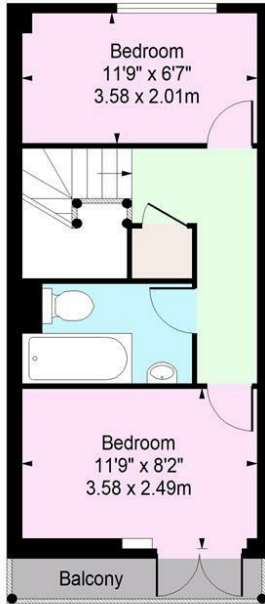
Raised Ground Floor

Floor Area 328 Sq Ft - 30.47 Sq M



First Floor

Floor Area 312 Sq Ft - 28.98 Sq M



Second Floor

Floor Area 311 Sq Ft - 28.89 Sq M

For Illustration Purposes Only - Not To Scale
www.londonpropertyassessments.co.uk

